

Clinical case with the newest composite OMNICHROMA



DR. DOMENICO LAFORNARA

PhD - MDT

Private dental practice in Martina Franca (TA) - Italy

I had the chance to be among the first to test the new concept proposed by Tokuyama with the Omnicroma composite "One choice for every shade". I wanted to test it in the rehabilitation of the posterior sectors and check it after a month even under the radiographic aspect. The clinical phases highlight the isolation with a rubber dam, the cavitory preparation, the adhesive phases and the subsequent use of Omnicroma to restore the correct morphology. Finally radiographic control, finishing and check. Even after 1 month to verify the success of the restoration not only from an aesthetic point of view.



BEFORE AND AFTER



Fig. 1/2/3 - Initial situation and caries detection

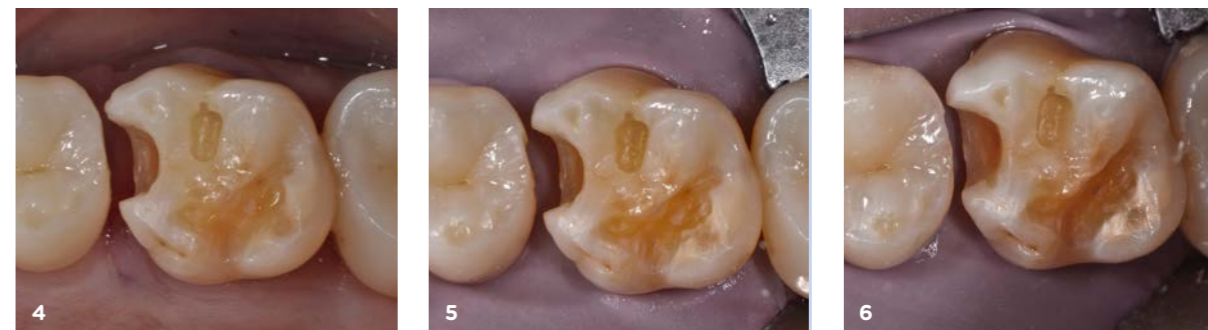


Fig. 4/5/6 - Isolation and cavity preparation

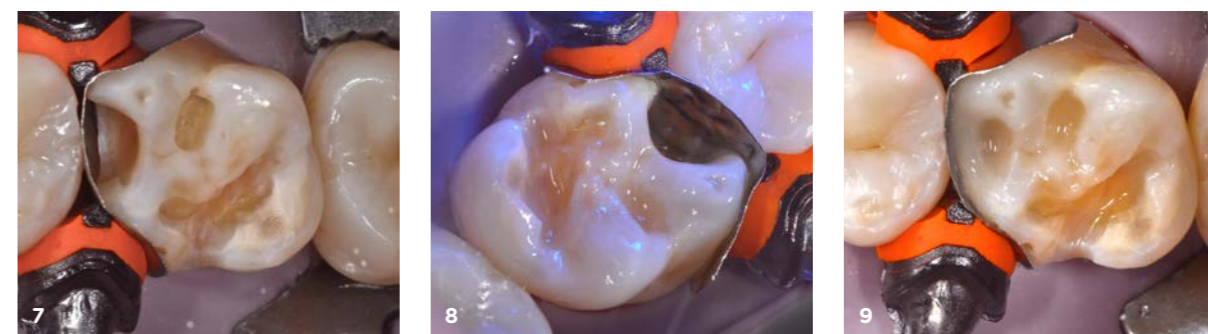


Fig. 7/8/9 - Adhesion steps and application of Blocker



Fig. 10/11/12 - Anatomical shaping and layering with Omnicroma

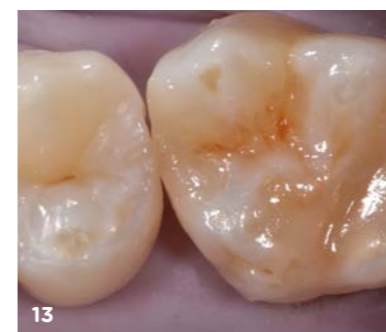


Fig. 13 - Restoration completed with Omnicroma



Fig. 14 - Control after 1 month

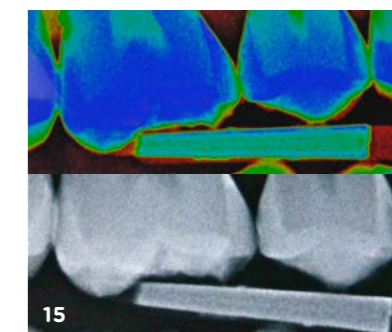


Fig. 15 - Radiographic check