

# Fragments reattachment and restoration of the vestibular surface and of the incisal lobes with A2B mass of Tokuyama Asteria



**DR. GIUSEPPE MARCHETTI**  
 Active Member: Style Italiano Study Club  
 Active Member: IAED  
 Active Member: AIC  
 Private dental practice in Parma - Italy

“ How to get a perfect reattachemnt result using only one body mass and no enamel to reach the great esthetic outcome and a perfect camaleontic morphology ”

**CLINICAL CASE**



Pre-operative the little child broke her left central incisor.

Initial situation



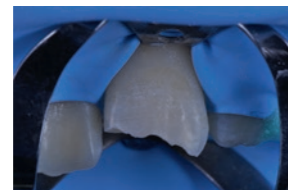
Details of the fracture on 2.1.



Detail of the fracture on 2.1.



Details of the frature from a lingual view.



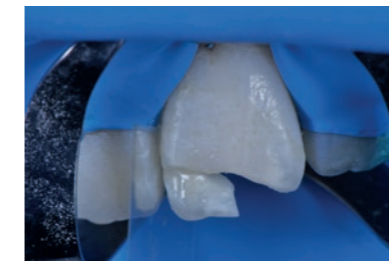
The isolation with the rubber dam.



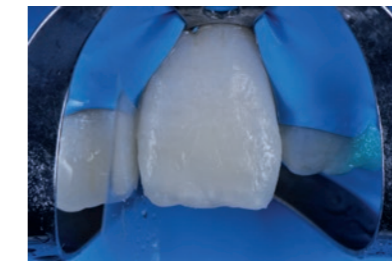
A bevel's done to remove the unsupported prisms of enamel and to mask properly the limits of the restoration and to increase the adhesion.



Details of the fragments before the etching procedures and the reattachment.



A free hand reattachment of both the fragments was done with an a2 body mass from asteria tokuyama.



Due to the fact that the two fragments were about the 60% of the loss, with the same body mass all the vestibular surface and the incisal lobes were restored back.



The young patient's smile after two weeks from the restorative procedures.



Details of the integration of the restoration on 2.1.



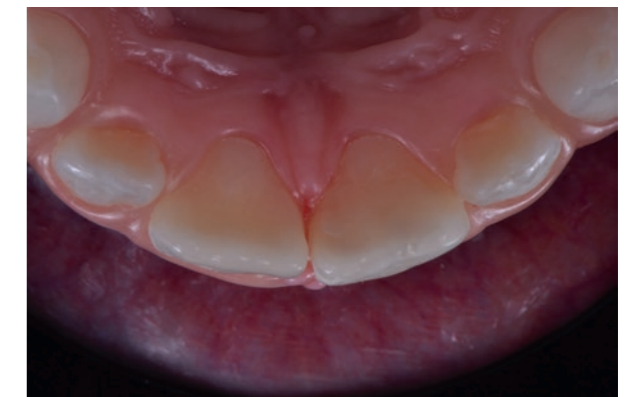
Details of the integration of the restoration on 2.1.



Details of 2.1.



Details of the secondary anatomy after the restorative procedures of 2.1.



Details of the reattachment and of the restoration from a lingual view.



Details of the reattachment and of the restoration from a lingual view.