

Thickness management in the remaking of incongruous restoration



DR MONALDO SARACYNELLI

Private dental practice in Grosseto - Italy
Active Member: Style Italiano Study Club
Active Member: AIC

I got to experience the composite Estelite Asteria (Tokuyama Dental) clinically, I had been described to have the high handling performance, polishing, perfect balance and color combination by simplifying the management of the body shades (body dentin) and enamel shades, useful for situations like the one I present, where a young 15 year old female patient presented itself to my observation for the element 1.1 remake (resulting from trauma), it became incongruous from an aesthetic point of view.



Fig. 1 Initial situation with incongruous restoration.

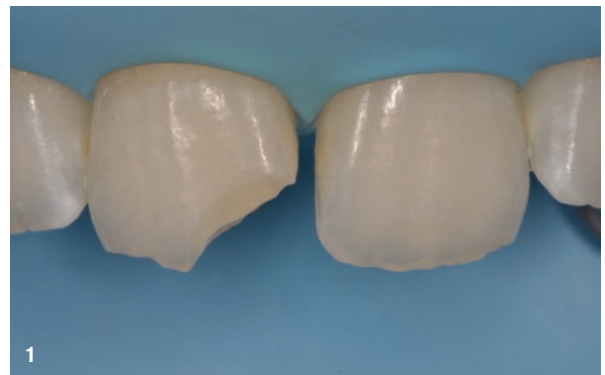


Fig. 2 Isolation with rubber dam for preparation and finishing of margins.



Fig. 3 Construction of palatal and dentin shell, using silicone key, with Estelite Asteria A1B.



Fig. 4 Management of enamel thickness, using Misura instrument.

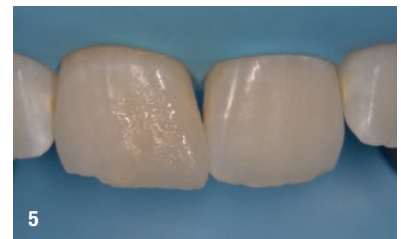


Fig. 5 Completed restoration under rubber dam, before finishing and polishing phases (Estelite Asteria OcE).

“ It can be appreciated how, thanks to the management of a body shade A1B and the use of the instrument “Misura Kit Arte StyleItaliano”, for the management and control of the vestibular thickness of enamel shade OcE, has got an excellent result, with integration from the chromatic and aesthetic point of view. ”

Fig. 6
Control to 1 week.

